

High performance solutions for sorting and recycling applications

ejection

Innovative patented technology, outstanding dynamic performances, ultra-fast and precise response times, proven reliability and unmatched operating life characteristics. Cost-effective flexible solutions expressly developed to match the requirements of modern sorting and recycling systems supported by professional knowhow and specific expertise.

High performance solutions for sorting and recycling applications

320 Series

High performance miniature ejector

Flowrate: 25 l/min @ 6 bar

Response time: down to 2 ms

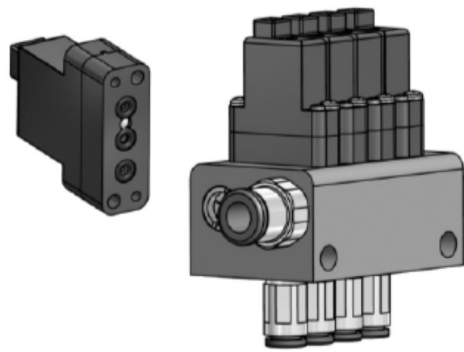
Pressure range: 0-8 bar

Electric connection: IP62 PicoSpox type integrated connector

Footprint: 8x23 mm

Weight: 15 gr

Sub-base configuration for manifold installation



820 Series

High performance ejector

Flowrate configurations: 100, 140, 180 l/min @ 6 bar

Response time: down to 1 ms

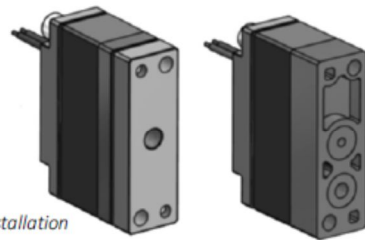
Pressure range: 2-8 bar

Electric connection: IP62 integrated cables, IP65 optional M8 integrated connector

Footprint: 12x37 mm

Weight: 25 gr

Individual versions for direct mounting with push-in fittings and sub-base versions for manifold installation



820 ISD Series | 820 ISD2 Series

High performance ejector with integrated 24 VDC speed-up driver

Flowrate: 100, 140, 180 l/min @ 6 bar

Response time: down to 1 ms

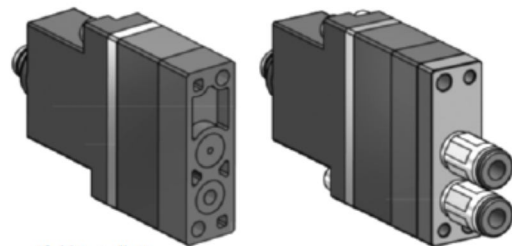
Pressure range: 2-8 bar

Electric connection: IP65 M8 integrated connector [3 pins YY | 2 pins WW]

Footprint: 12x37 mm

Weight: 35 gr

Individual versions for direct mounting with push-in fittings and sub-base versions for manifold installation



840 Series | 880 Series

High performance ejector | Multi-flow

Flowrate: up to 300 l/min @ 6 bar (150 l/min + 150 l/min modular architecture)

Response time: down to 2 ms

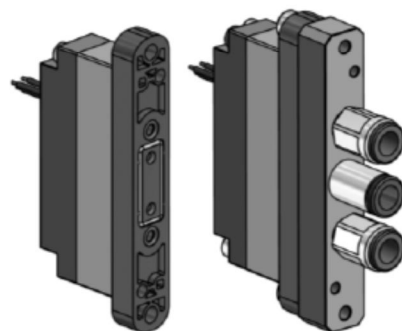
Pressure range: 2-8 bar

Electric connection: IP62 integrated cables, IP65 optional M8 integrated connector

Footprint: 12x75 mm

Weight: 35 gr

Sub-base configuration for manifold installation



840 ISD Series | 880 ISD Series

High performance ejector with integrated speed-up driver

Flowrate: 300 l/min @ 6 bar

Response time: down to 2 ms

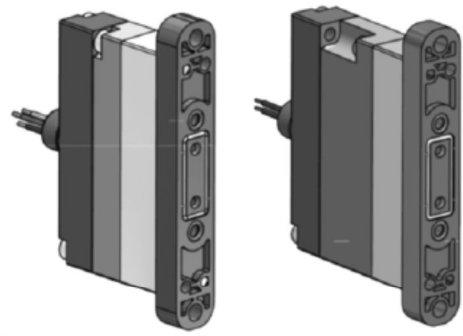
Pressure range: 2-8 bar

Electric connection: IP62 integrated cables

Footprint: 12x75 mm

Weight: 45 gr

Sub-base configuration for manifold installation



580 Series

High performance multi-ejector

Modular architecture: 8 independent outlets

Flowrate: 180 l/min @ 6 bar x 8 outlets

Response time: down to 1,5 ms

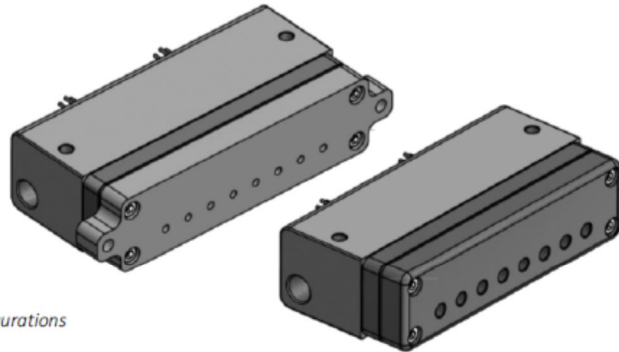
Pressure range: 0-5 bar

Electric connection: IP62 integrated cables

Footprint: 118x28 mm

Weight: 400 gr

Available in direct mounting with push-in fittings and sub-base configurations



890 Series

Ultra high performance multi-ejector

Modular architecture: up to 9 independent outlets

Flowrate: 100, 140, 180 l/min @ 6 bar x 9 outlets

Response time: down to 1 ms

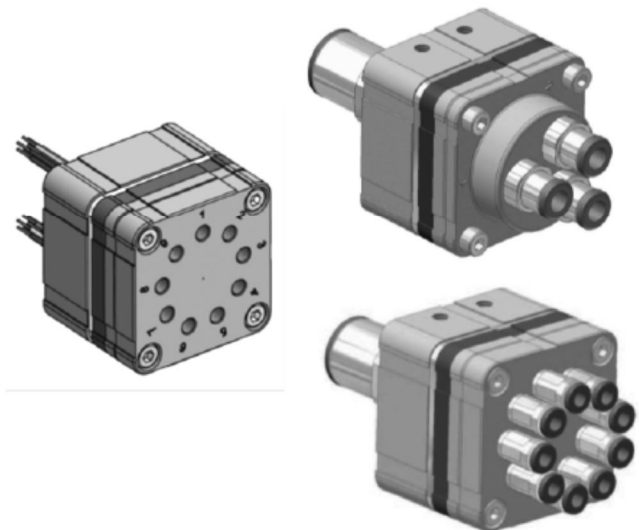
Pressure range: 2-8 bar

Electric connection: IP62 integrated cables

Footprint: 46x46 mm

Weight: 230 gr

Also available in other flowrate / outlets configurations



750 Series

High performance solenoid multi-valve

Modular architecture: up to 8 independent outlets (2/2 or 3/2)

Flowrate: from 50 l/min up to 700 l/min depending on outlets configuration

Response time: down to 2 ms

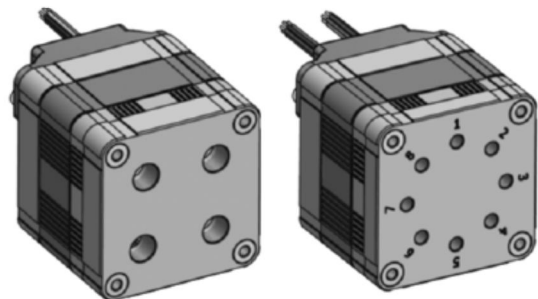
Pressure range: 0-8 bar

Electric connection: IP65 Easy Connection System (proprietary)

Footprint: 55x55 mm

Weight: 350 gr

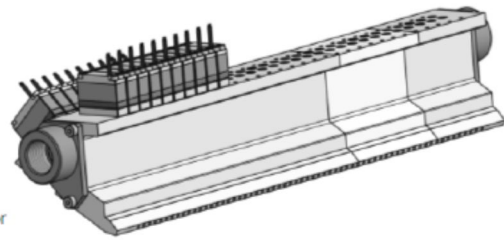
Also available in other flowrate / outlets configurations



GM820 Series

High performance manifold unit (820 Series / 820 ISD / 820 ISD2 Series ejectors)

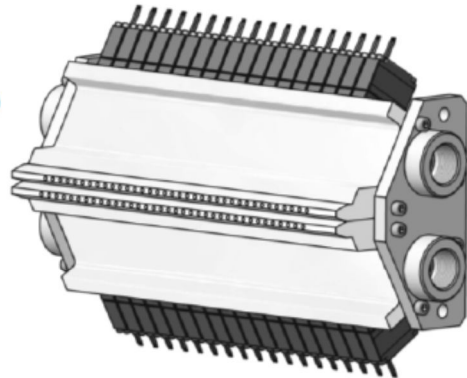
Outlets / nozzles: up to 360
Flowrate configurations: 100, 140, 180 l/min @ 6 bar
Pitch: from 6 mm up
Response time: down to 1 ms
Pressure range: 2-8 bar
Pneumatic connections: n.2 G3/4" or G1"
Electric connection: IP62 integrated cables, IP65 optional M8 integrated connector
Custom configurations available upon request



GMT820 Series

High performance twin manifold unit (820 Series / 820 ISD / 820 ISD2 Series ejectors)

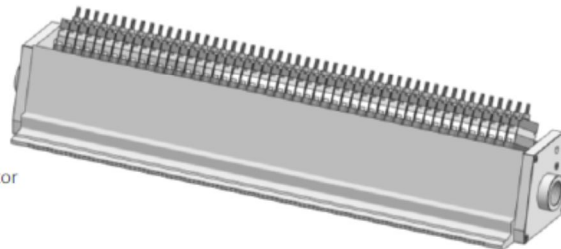
Outlets / nozzles: up to 720
Flowrate configurations: 100, 140, 180 l/min @ 6 bar
Pitch: from 3 mm, 10 mm vertical offset
Response time: down to 1 ms
Pressure range: 2-8 bar
Pneumatic connections: n.4 G3/4" or G1"
Electric connection: IP62 integrated cables, IP65 optional M8 integrated connector
Custom configurations available upon request



GM840 / GM880 Series | GML840 / GML880 Series | GMT840 / GMT880 Series

High performance manifold unit (840 / 880 Series or 840 / 880 ISD Series ejectors)

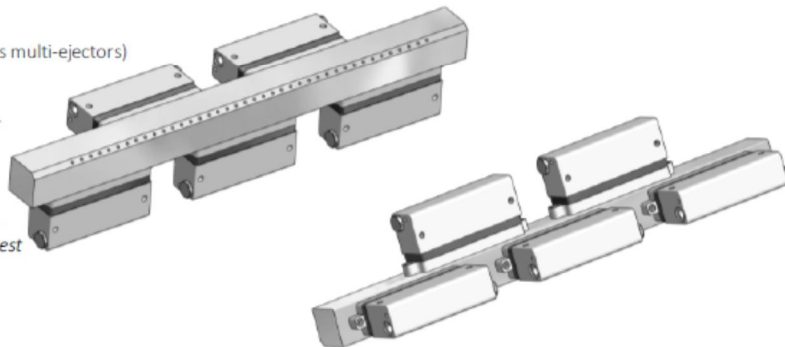
Outlets / nozzles: up to 360
Flowrate configurations: 150, 300 l/min @ 6 bar
Pitch: from 3 mm
Response time: down to 2 ms
Pressure range: 2-8 bar
Pneumatic connections: G3/4" or G1"
Electric connection: IP62 integrated cables, IP65 M8 integrated connector
Custom configurations available upon request



GM580 Series

High performance manifold unit (580 Series multi-ejectors)

Outlets / nozzles: multiples of 8
Flowrate configurations: 180 l/min @ 6 bar
Pitch: 9 mm
Response time: down to 1,5 ms
Pressure range: 0-5 bar
Electric connection: IP62 integrated cables
Custom configurations available upon request



GM890 Series

High performance compressed air manifold unit (890 Series multi-ejectors)

Outlets / nozzles: multiples of 8 or 9 (depending on the multi-ejectors configuration)

Flowrate configurations: 100, 140 or 180 l/min @ 6 bar depending on ejector model

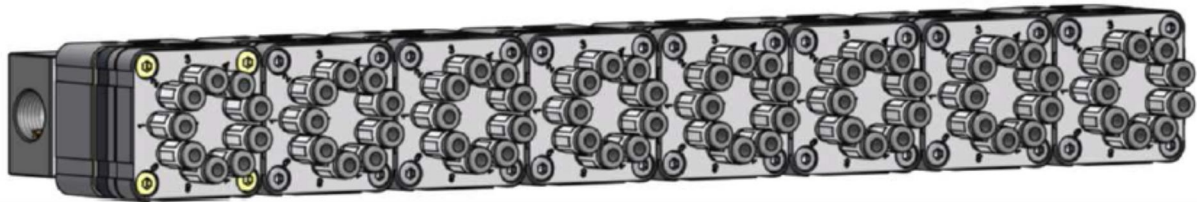
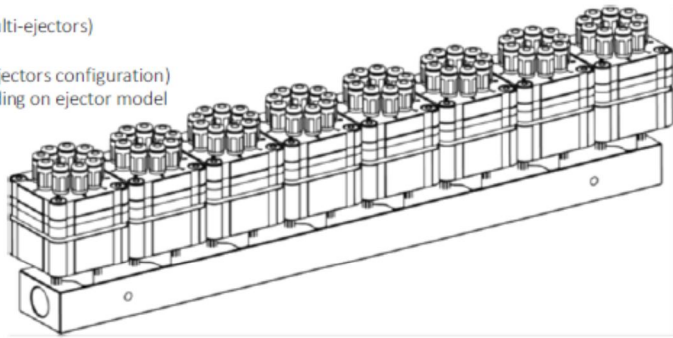
Response time: down to 1 ms

Pressure range: 2-8 bar

Electric connections: IP62 integrated cables

Pneumatic connections: n.2 G3/8"

Custom configurations available upon request



Ejection nozzles

High performance modular ejection nozzles units

Number of nozzles: multiples of 8 or 9

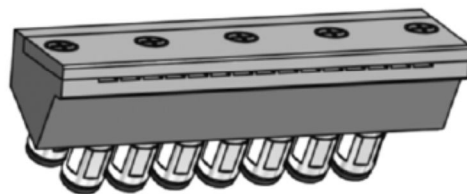
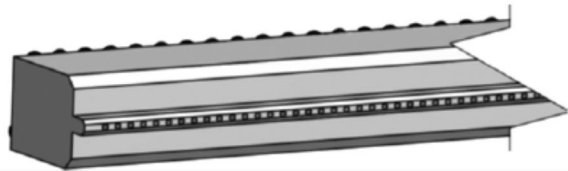
Nozzles design: circular or rectangular

Nozzles size: depending on ejector model

Pitch: from 3 mm (depending on ejector model and configuration)

Pneumatic connections: Ø4xM5 push-in fittings

Custom configurations available upon request



HSDB930 | HSDB990 Series

High performance multi-channel speed-up driver boards

Number of channels: up to 9

Power supply: 24 VDC

Logic input signals: 5 - 24 VDC

Max operating frequency: 500 Hz (depending on ejector model and configuration)

Electric connections: terminal block, multiple board connectors

Custom configurations available upon request

